



MFG Construction Products Company

One Piece Round Column Forms

1

Round Column Forms
One Piece Round

One

One as superior

One as simple



One-Piece Round Column Forms

MFG one-piece round column forms (RCFs) are economical, and produce a smooth concrete finish. Manufactured of fiberglass reinforced plastic, these forms will not dent, sag, rot or weather and they require little, if any, maintenance.

MFG Round Column Forms (RCFs) are lightweight, easy to handle, and simple to

set up and remove. MFG RCF's have only one vertical seam and are supplied complete with bracing collars and "fast" bolts. MFG RCF's are designed for repeat use.

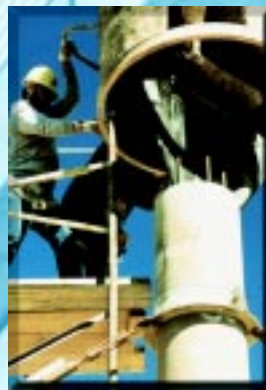
MFG RCFs are nest-able thus requiring less storage and shipping space. Diameters from 12 to 48 inches are available in one-piece lengths up to 20 feet. RCFs can be rented or purchased.

Suggested Specifications

One-piece fiberglass reinforced plastic round column forms, manufactured by MFG Construction Products Company, have a single vertical seam and smooth interior surface .



1. Setup



2. Fill



3. Remove



4. Finished

For availability and costs
1-800-CALL MFG
 2 2 5 5 6 3 4



US Units

Column Diameter, inches	Max. Length, feet	Approx. Wt. Per Lineal ft., lbs	Approx. Vol. of Concrete Per lineal ft., cubic feet
12	20	9.9	0.8
14	20	10.0	1.0
16	20	11.1	1.4
18	20	12.3	1.8
20	20	13.1	2.2
22	20	14.2	2.6
24	20	15.2	3.1
26	20	16.2	3.6
28	20	17.3	4.2
30	20	18.4	4.9
32	20	19.5	5.5
34	20	20.5	6.3
36	20	21.5	7.0
38	20	22.6	7.9
40	20	23.7	8.7
42	20	24.8	9.6
44	20	25.8	10.6
46	20	26.8	11.5
48	20	27.9	12.6

Maximum lateral pressure should not exceed 2,250 psf. Based on Table 5-5, page 5-13, Formwork For Concrete Sixth Edition, maximum rate of fill is:

At 90°F: 20 ft. per hr.
 At 80°F: 18 ft. per hr.
 At 70°F: 16 ft. per hr.

At 60°F: 14 ft. per hr.
 At 50°F: 11 ft. per hr.
 At 40°F: 9 ft. per hr.

SI Units

Column Diameter, millimeters	Max. Length, meters	Approx. Wt. Per Lineal Meter, kilogram/meter	Approx. Vol. of Concrete Per Lineal Meter cubic meters/meter
304.8	6.096	14.76	0.0743
355.6	6.096	14.913	0.0929
406.4	6.096	16.553	0.13
457.2	6.096	18.34	0.167
508.0	6.096	19.536	0.2044
558.8	6.096	21.176	0.2415
609.6	6.096	22.667	0.288
660.4	6.096	24.16	0.334
711.2	6.096	25.8	0.39
762.0	6.096	27.44	0.455
812.8	6.096	29.08	0.51
863.6	6.096	30.57	0.585
914.4	6.096	32.06	0.65
965.2	6.096	33.7	0.734
1016.0	6.096	35.34	0.808
1066.8	6.096	37.00	0.8918
1117.6	6.096	38.475	0.9847
1168.4	6.096	40.00	1.068
1219.2	6.096	41.6	1.17

Maximum lateral pressure should not exceed 108,000 Pascals (or 11,009 Kg/sq meters).

Based on Table 5-5, page 5-13, Formwork For Concrete Sixth Edition, maximum rate of fill is:

At 32.2°C: 6.096 m. per hr.
 At 26.7°C: 5.486 m. per hr.
 At 21.1°C: 4.877 m. per hr.

At 15.5°C: 4.267 m. per hr.
 At 10.0°C: 3.353 m. per hr.
 At 4.4°C: 2.743 m. per hr.

Molded Fiber Glass Construction Products Company

P.O. Box 685, 1018 West Sycamore St., Independence, KS 67301
 620.331.7366 • Fax 620.331.8647 • Toll Free 800.225.5634
<http://www.mfgcp.com> • E-mail: customerservice@mfgcp.com
 Printed in the U.S.A. RCF01

Available through: